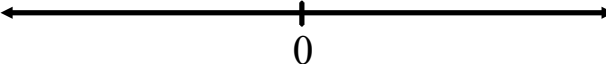


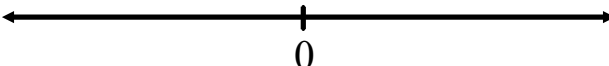
Algebra II

G-3

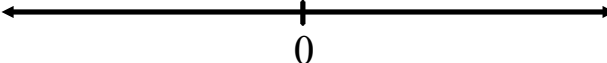
Interval Notation, Domains, and Ranges

1) Graph: $x > 5$ 

interval notation: _____

2) Graph: $x \leq 4$ 

interval notation: _____

3) Graph: $-3 < x \leq 7$ 

interval notation: _____

Recap - Definitions

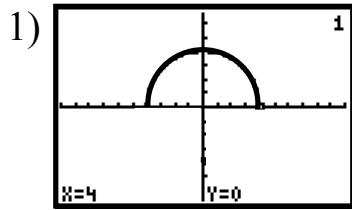
Domain -
actual -

helpful-

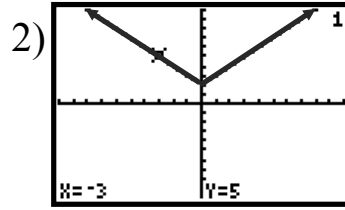
Range -
actual -

helpful-

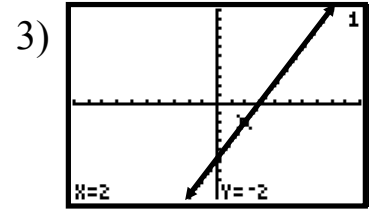
Label the domain and range of each graph using interval notation.



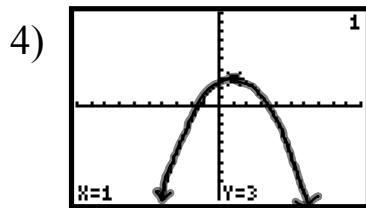
domain: _____
range: _____



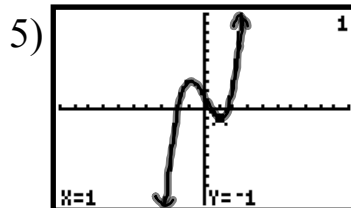
domain: _____
range: _____



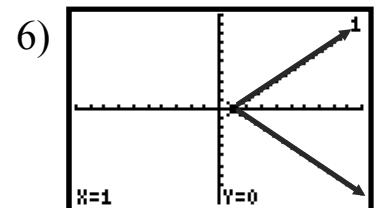
domain: _____
range: _____



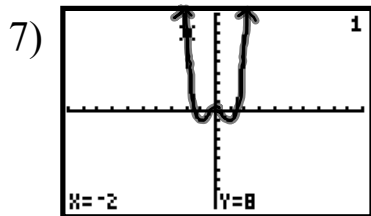
domain: _____
range: _____



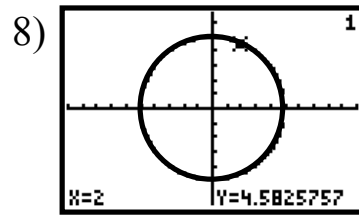
domain: _____
range: _____



domain: _____
range: _____



domain: _____
range: _____



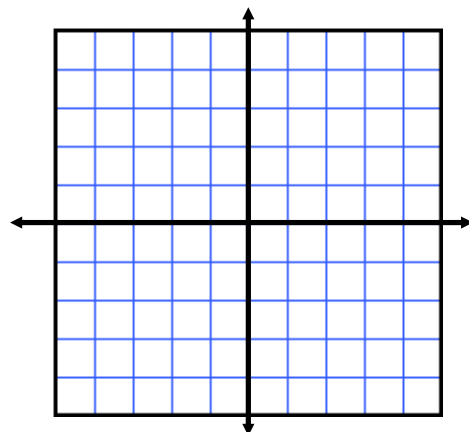
domain: _____
range: _____

A Curious Graph

$$y = \frac{1}{x}$$

domain: _____

range: _____



Assignment:
G-3 Handout